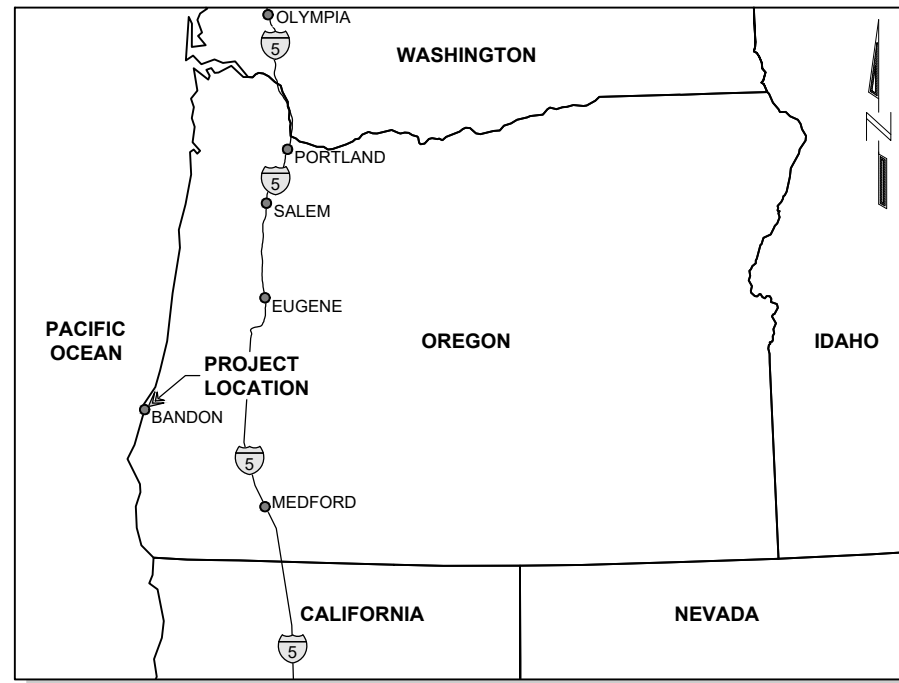


PORT OF BANDON

BANDON MARINA REDEVELOPMENT



VICINITY MAP
NOT TO SCALE



LOCATION MAP
NOT TO SCALE

SHEET INDEX

- 1 TITLE SHEET AND SHEET INDEX
- 2 EXISTING CONDITIONS
- 3 DEMOLITION PLAN
- 4 PROPOSED FLOAT LAYOUT
- 5 PILE DETAILS
- 6 TYPICAL FLOAT SECTIONS
- 7 ALTERNATE HDPE FLOAT SECTIONS
- 8 GANGWAY DETAILS
- 9 PROPOSED WATER UTILITY PLAN
- 10 ELECTRICAL SERVICE PLAN

PROJECT INFORMATION

TIDAL DATA
 MEAN HIGHER HIGH WATER (MHHW): 7.10'
 MEAN HIGH WATER (MHW): 6.38'
 MEAN TIDE LEVEL (MTL): 3.77'
 MEAN LOW WATER (MLW): 1.19'
 MEAN LOWER LOW WATER (MLLW): 0.00'

PROJECT DATA
 LATITUDE: 43° 7.2' N
 LONGITUDE: 124° 24.8' W

10/11/22 - WLE - K12019194022 - BANDON MARINA 30% DESIGN REV 2/19/2022 - BANDON MARINA.DWG

DIGITAL SIGNATURE:

THIS DRAWING SET WAS CREATED AS AN ELECTRONIC DOCUMENT. IF THE ELECTRONIC DOCUMENT DOES NOT INCLUDE A VERIFIABLE DIGITAL SIGNATURE IN THE BOX ABOVE, PLEASE CONTACT THE ENGINEER OF RECORD FOR THE ORIGINAL CERTIFIED ELECTRONIC DOCUMENT.

PND ENGINEERS, INC.
 3240 Eastlake Avenue E.
 Seattle, Washington 98102
 P: 206.624.1387
 www.pndengineers.com

30% LEVEL PRELIMINARY PLANS (REV.2)

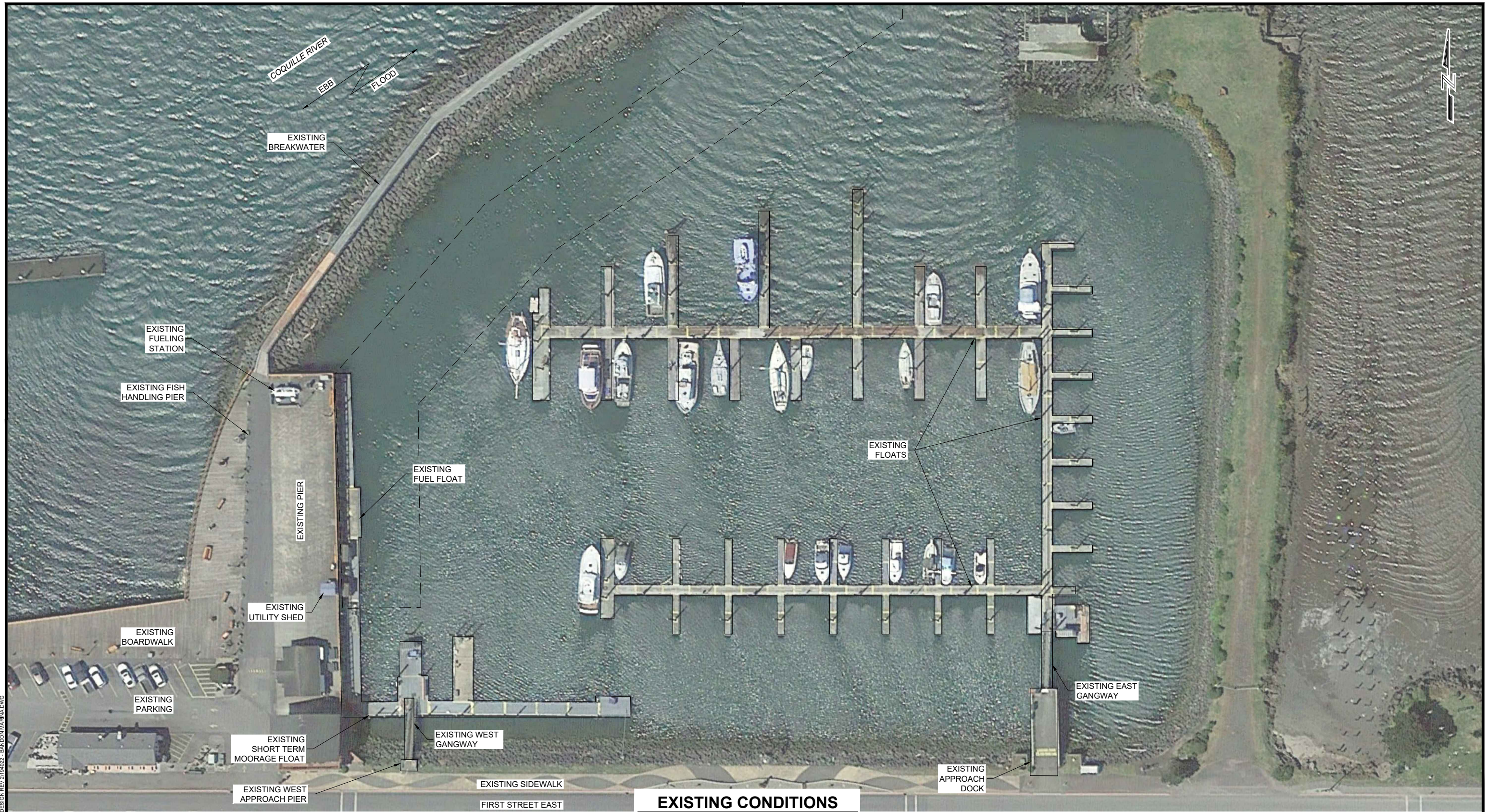
REVISIONS		
REV	DATE	DESCRIPTION

PROJECT: **PORT OF BANDON
BANDON MARINA REDEVELOPMENT**

TITLE: **TITLE SHEET AND SHEET INDEX**

DESIGNED BY: RJ	PROJECT NO: 194022	SHEET NO:
DRAWN BY: WL	DATE: OCTOBER 2022	1 OF 9
CHECKED BY:	SCALE: NOTED	

PND ENGINEERS, INC. IS NOT RESPONSIBLE FOR SAFETY PROGRAMS, METHODS OR PROCEDURES OF OPERATION, OR THE CONSTRUCTION OF THE DESIGN SHOWN ON THESE DRAWINGS. WHERE SPECIFICATIONS ARE GENERAL OR NOT CALLED OUT, THE SPECIFICATIONS SHALL CONFORM TO STANDARDS OF INDUSTRY. DRAWINGS ARE FOR USE ON THIS PROJECT ONLY AND ARE NOT INTENDED FOR REUSE WITHOUT WRITTEN APPROVAL FROM PND. DRAWINGS ARE ALSO NOT TO BE USED IN ANY MANNER THAT WOULD CONSTITUTE A DETRIMENT DIRECTLY OR INDIRECTLY TO PND.



EXISTING CONDITIONS



30% LEVEL PRELIMINARY PLANS (REV.2)



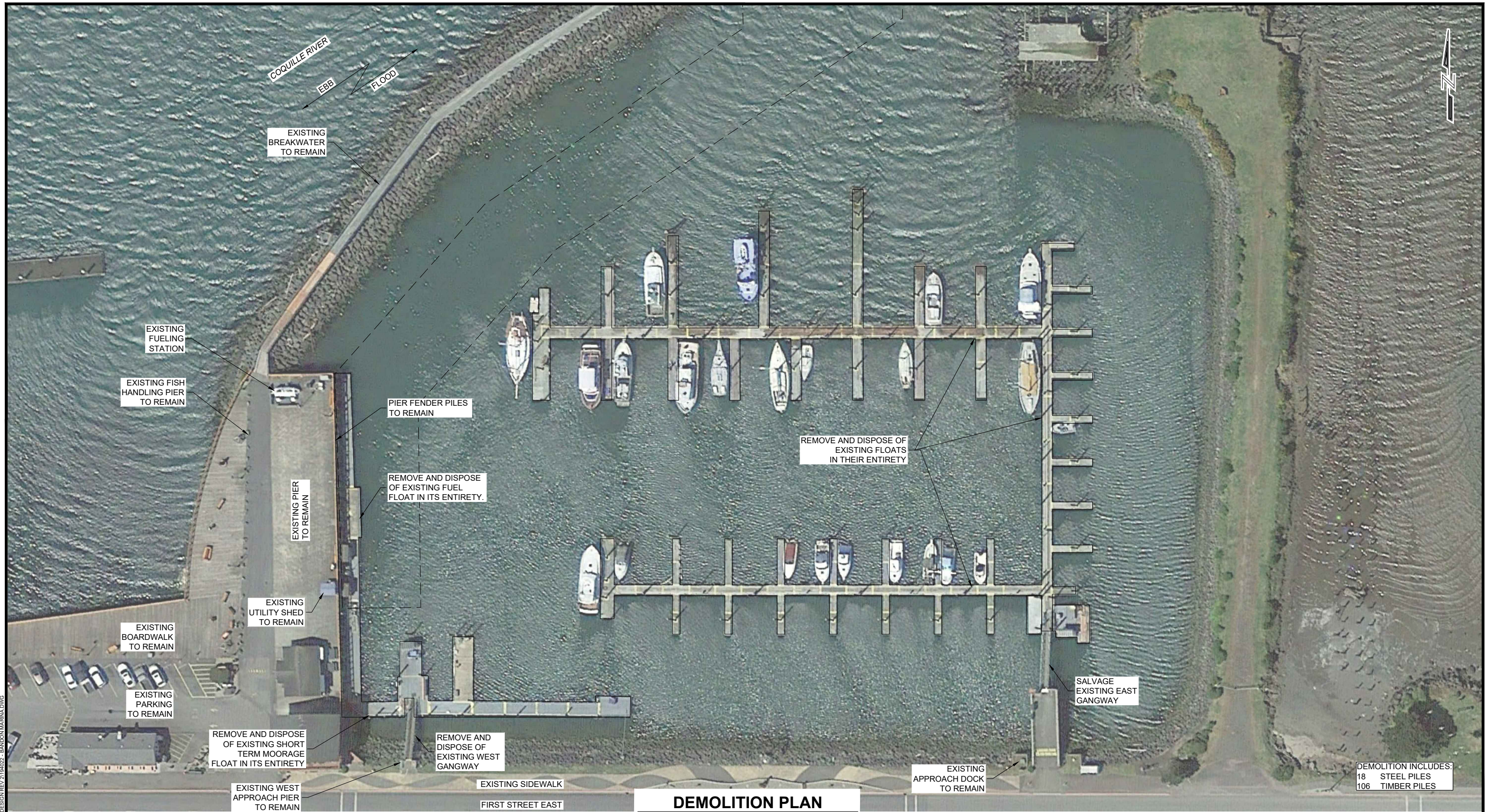
3240 Eastlake Avenue E
Seattle, Washington 98102
P: 206.624.1387
www.pndengineers.com

REVISIONS		
REV	DATE	DESCRIPTION

PND ENGINEERS, INC. IS NOT RESPONSIBLE FOR SAFETY PROGRAMS, METHODS OR PROCEDURES OF OPERATION, OR THE CONSTRUCTION OF THE DESIGN SHOWN ON THESE DRAWINGS. WHERE SPECIFICATIONS ARE GENERAL OR NOT CALLED OUT, THE SPECIFICATIONS SHALL CONFORM TO STANDARDS OF INDUSTRY. DRAWINGS ARE FOR USE ON THIS PROJECT ONLY AND ARE NOT INTENDED FOR REUSE WITHOUT WRITTEN APPROVAL FROM PND. DRAWINGS ARE ALSO NOT TO BE USED IN ANY MANNER THAT WOULD CONSTITUTE A DETRIMENT DIRECTLY OR INDIRECTLY TO PND.

PROJECT: PORT OF BANDON BANDON MARINA REDEVELOPMENT			
TITLE: EXISTING CONDITIONS			
DESIGNED BY: RJ	PROJECT NO: 194022	SHEET NO: 2 OF 9	
DRAWN BY: WL	DATE: OCTOBER 2022		
CHECKED BY:	SCALE: NOTED		

10/11/22 - WLE - K12019194022 - BANDON MARINA 30% DESIGN REV 2/19/2022 - BANDON MARINA.DWG



DEMOLITION INCLUDES:
 18 STEEL PILES
 106 TIMBER PILES

DEMOLITION PLAN



30% LEVEL PRELIMINARY PLANS (REV.2)



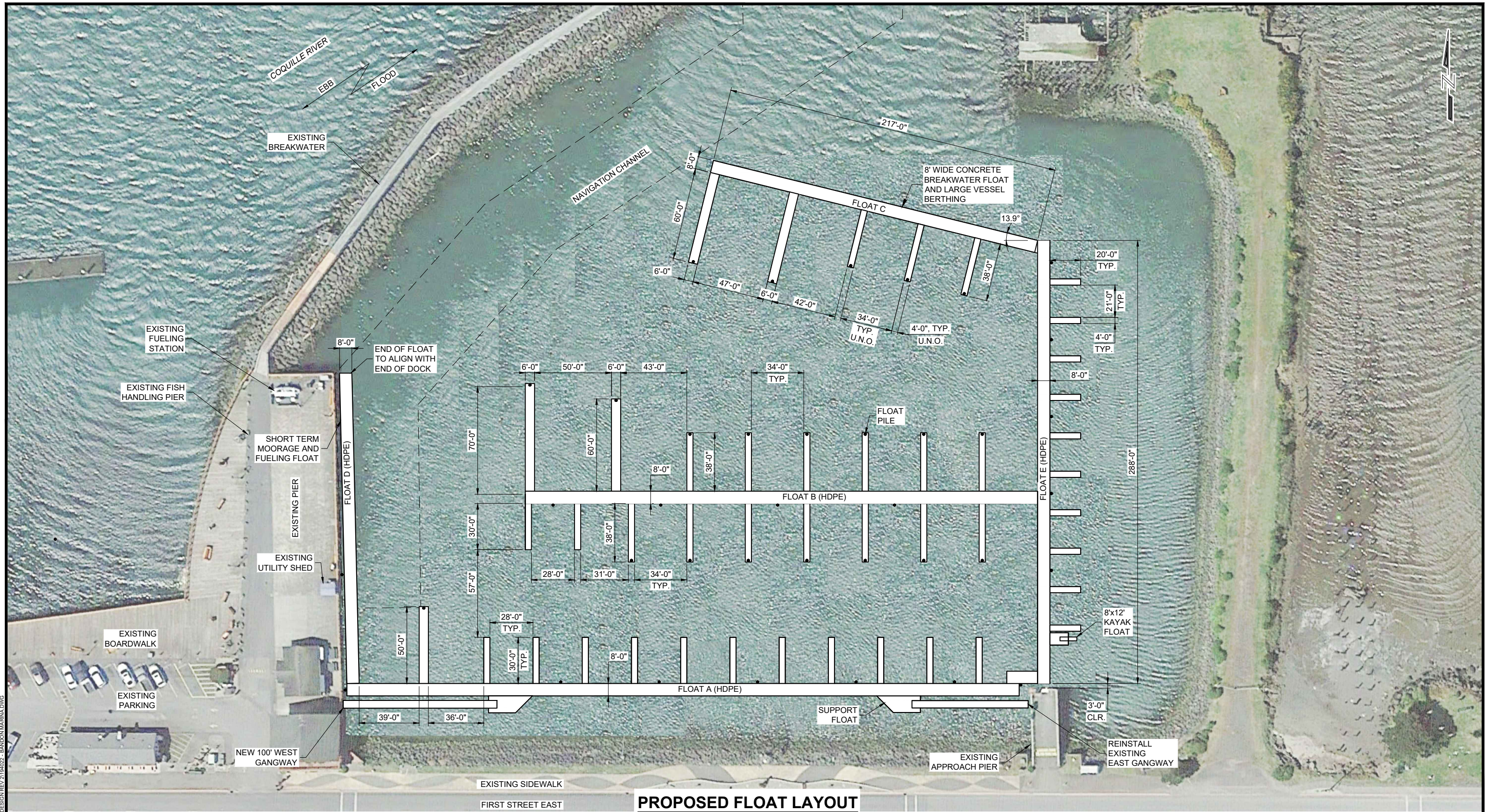
3240 Eastlake Avenue E
 Seattle, Washington 98102
 P: 206.624.1387
 www.pndengineers.com

REVISIONS		
REV	DATE	DESCRIPTION

PND ENGINEERS, INC. IS NOT RESPONSIBLE FOR SAFETY PROGRAMS, METHODS OR PROCEDURES OF OPERATION, OR THE CONSTRUCTION OF THE DESIGN SHOWN ON THESE DRAWINGS. WHERE SPECIFICATIONS ARE GENERAL OR NOT CALLED OUT, THE SPECIFICATIONS SHALL CONFORM TO STANDARDS OF INDUSTRY. DRAWINGS ARE FOR USE ON THIS PROJECT ONLY AND ARE NOT INTENDED FOR REUSE WITHOUT WRITTEN APPROVAL FROM PND. DRAWINGS ARE ALSO NOT TO BE USED IN ANY MANNER THAT WOULD CONSTITUTE A DETRIMENT DIRECTLY OR INDIRECTLY TO PND.

PROJECT: PORT OF BANDON BANDON MARINA REDEVELOPMENT			
TITLE: DEMOLITION PLAN			
DESIGNED BY: RJ	PROJECT NO: 194022	SHEET NO: 3 OF 9	
DRAWN BY: WL	DATE: OCTOBER 2022		
CHECKED BY:	SCALE: NOTED		

10/11/22 - WLE - K12019194022 - BANDON MARINA 30% DESIGN REV 2/19/2022 - BANDON MARINA.DWG



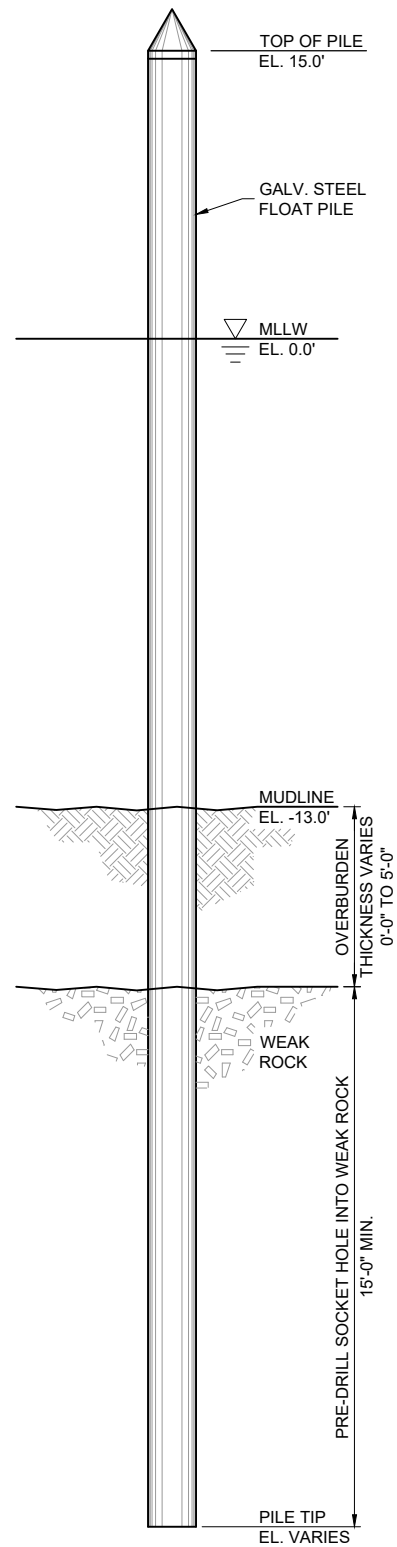
30% LEVEL PRELIMINARY PLANS (REV.2)

P | N | D
ENGINEERS, INC.
 3240 Eastlake Avenue E
 Seattle, Washington 98102
 P: 206.624.1387
 www.pndengineers.com

REVISIONS		
REV	DATE	DESCRIPTION

PND ENGINEERS, INC. IS NOT RESPONSIBLE FOR SAFETY PROGRAMS, METHODS OR PROCEDURES OF OPERATION, OR THE CONSTRUCTION OF THE DESIGN SHOWN ON THESE DRAWINGS. WHERE SPECIFICATIONS ARE GENERAL OR NOT CALLED OUT, THE SPECIFICATIONS SHALL CONFORM TO STANDARDS OF INDUSTRY. DRAWINGS ARE FOR USE ON THIS PROJECT ONLY AND ARE NOT INTENDED FOR REUSE WITHOUT WRITTEN APPROVAL FROM PND. DRAWINGS ARE ALSO NOT TO BE USED IN ANY MANNER THAT WOULD CONSTITUTE A DETRIMENT DIRECTLY OR INDIRECTLY TO PND.

PROJECT: PORT OF BANDON BANDON MARINA REDEVELOPMENT			
TITLE: PROPOSED FLOAT LAYOUT			
DESIGNED BY: RJ	PROJECT NO: 194022	SHEET NO: 4 OF 9	
DRAWN BY: WL	DATE: OCTOBER 2022		
CHECKED BY:	SCALE: NOTED		



TYPICAL FLOAT PILE

PILE SCHEDULE			
FLOAT	PILE SIZE	THICKNESS	PILE COUNT
A	16"Ø	0.500"	7
B	16"Ø	0.500"	19
C	16"Ø	0.500"	15
D	16"Ø	0.500"	2
E	16"Ø	0.500"	5
TOTAL	--	--	48

30% LEVEL PRELIMINARY PLANS (REV.2)

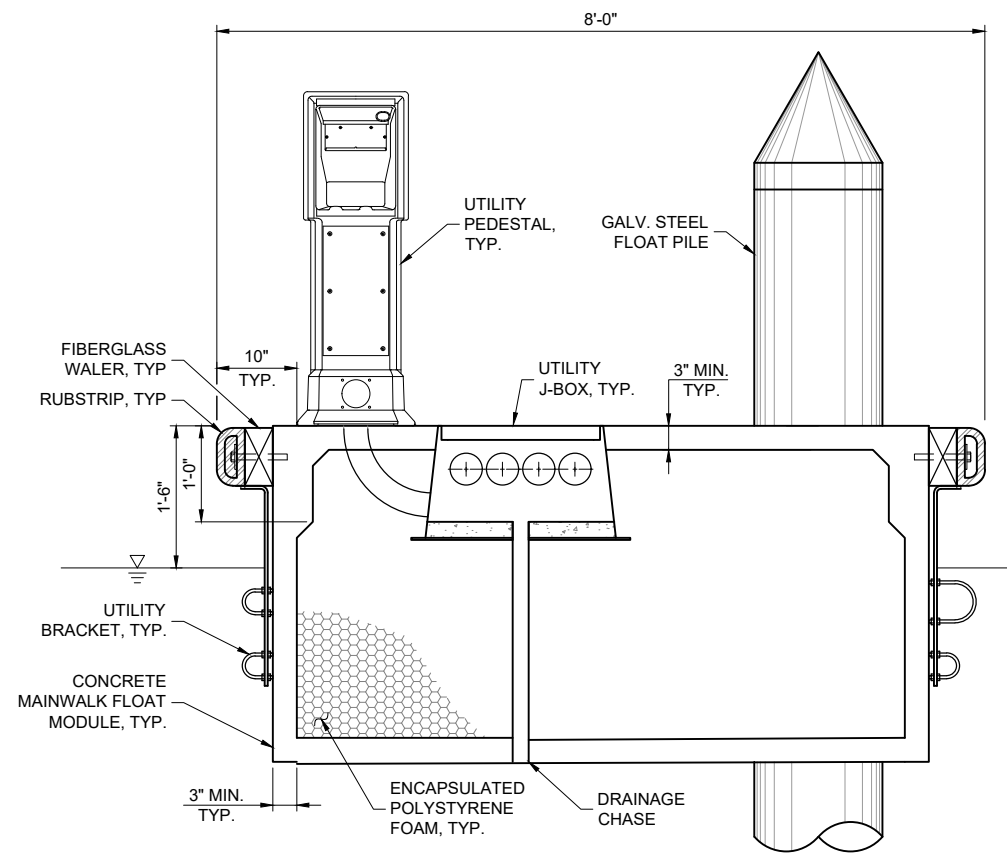

 3240 Eastlake Avenue E.
 Seattle, Washington 98102
 P: 206.624.1387
 www.pndengineers.com

REVISIONS		
REV	DATE	DESCRIPTION

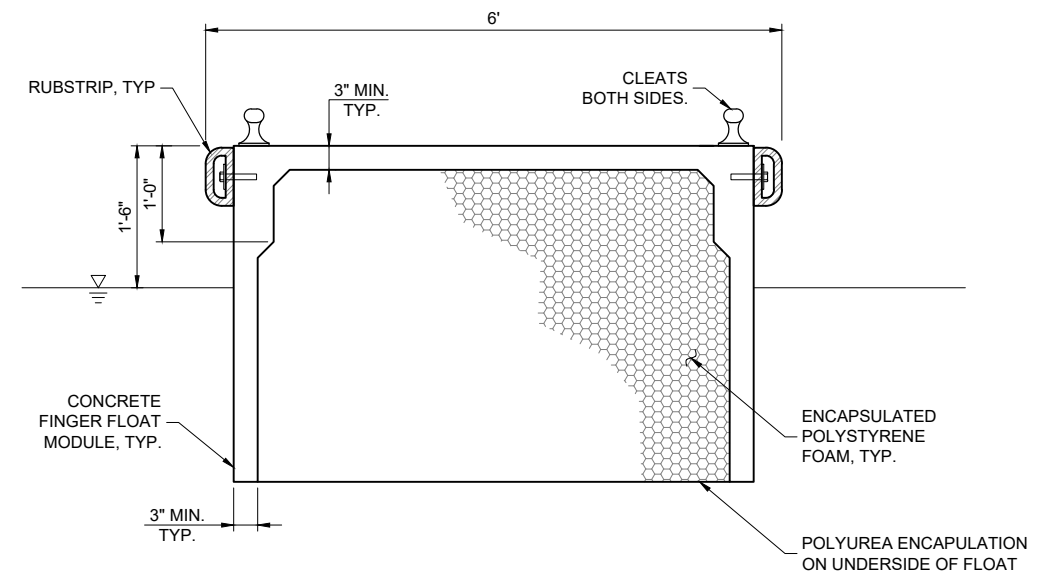
PND ENGINEERS, INC. IS NOT RESPONSIBLE FOR SAFETY PROGRAMS, METHODS OR PROCEDURES OF OPERATION, OR THE CONSTRUCTION OF THE DESIGN SHOWN ON THESE DRAWINGS. WHERE SPECIFICATIONS ARE GENERAL OR NOT CALLED OUT, THE SPECIFICATIONS SHALL CONFORM TO STANDARDS OF INDUSTRY. DRAWINGS ARE FOR USE ON THIS PROJECT ONLY AND ARE NOT INTENDED FOR REUSE WITHOUT WRITTEN APPROVAL FROM PND. DRAWINGS ARE ALSO NOT TO BE USED IN ANY MANNER THAT WOULD CONSTITUTE A DETRIMENT DIRECTLY OR INDIRECTLY TO PND.

PROJECT:		PORT OF BANDON BANDON MARINA REDEVELOPMENT	
TITLE:		PILE DETAILS	
DESIGNED BY:	RJ	PROJECT NO:	194022
DRAWN BY:	WL	DATE:	OCTOBER 2022
CHECKED BY:		SCALE:	NOTED
SHEET NO:		5 OF 9	

10/11/22 - WLE - K12019194022 - BANDON MARINA 30% DESIGN REV 2/19/4022 - BANDON MARINA.DWG



**FLOAT C
CONCRETE SECTION**
BREAKWATER



**FLOAT C FINGER FLOAT
CONCRETE SECTION**

30% LEVEL PRELIMINARY PLANS (REV.2)

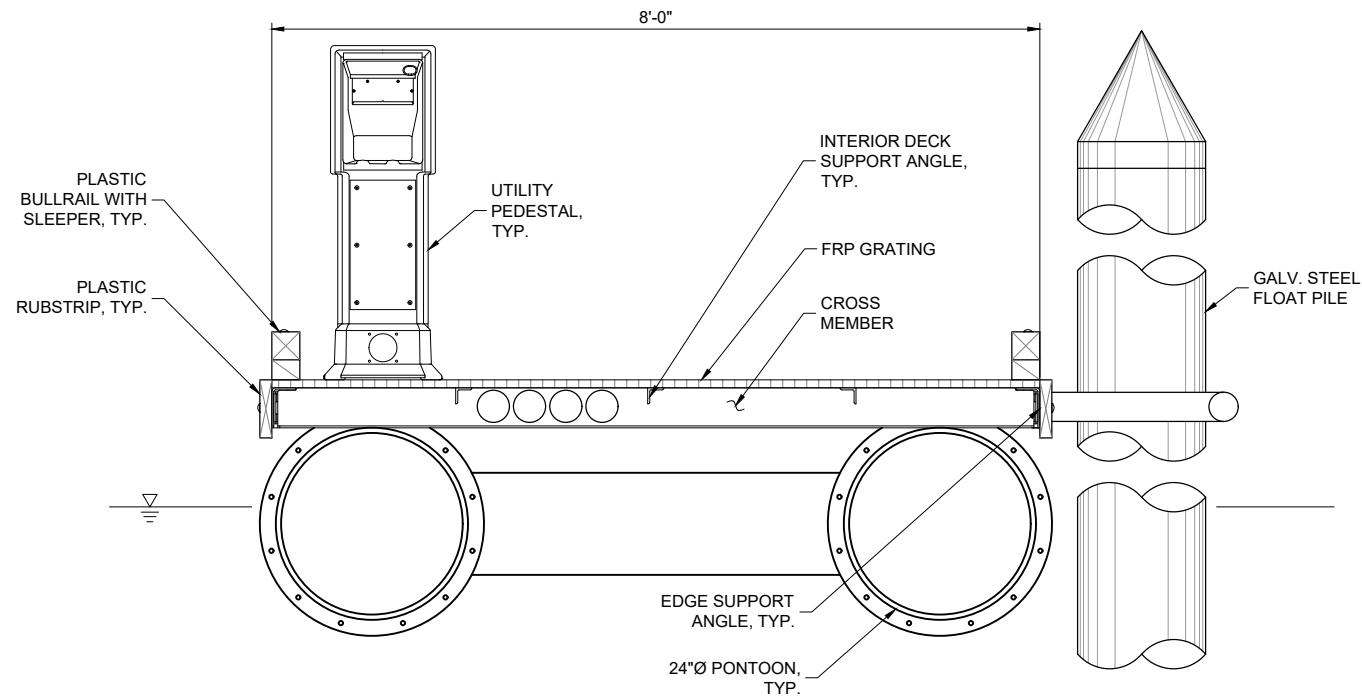
P | N | D
ENGINEERS, INC.
3240 Eastlake Avenue E.
Seattle, Washington 98102
P: 206.624.1387
www.pndengineers.com

REVISIONS		
REV	DATE	DESCRIPTION

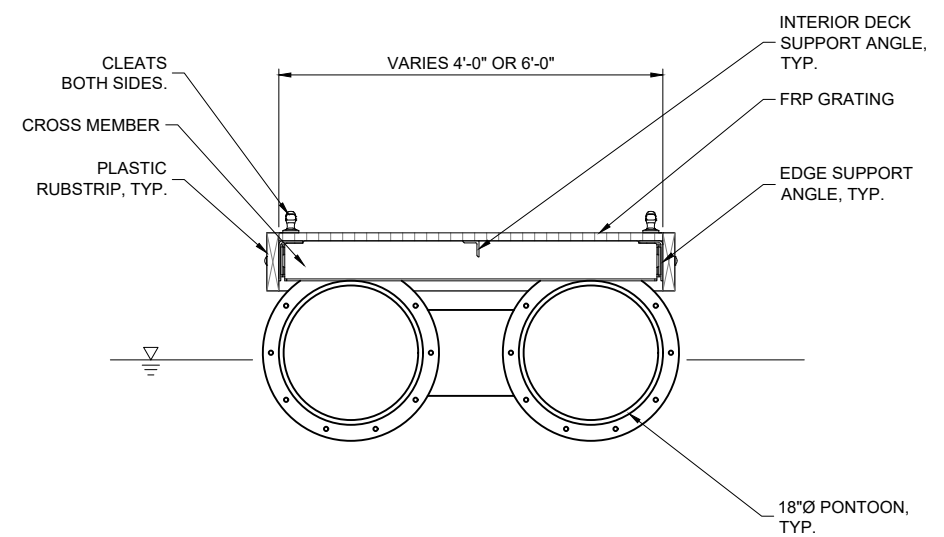
PND ENGINEERS, INC. IS NOT RESPONSIBLE FOR SAFETY PROGRAMS, METHODS OR PROCEDURES OF OPERATION, OR THE CONSTRUCTION OF THE DESIGN SHOWN ON THESE DRAWINGS. WHERE SPECIFICATIONS ARE GENERAL OR NOT CALLED OUT, THE SPECIFICATIONS SHALL CONFORM TO STANDARDS OF INDUSTRY. DRAWINGS ARE FOR USE ON THIS PROJECT ONLY AND ARE NOT INTENDED FOR REUSE WITHOUT WRITTEN APPROVAL FROM PND. DRAWINGS ARE ALSO NOT TO BE USED IN ANY MANNER THAT WOULD CONSTITUTE A DETRIMENT DIRECTLY OR INDIRECTLY TO PND.

PROJECT:		PORT OF BANDON BANDON MARINA REDEVELOPMENT	
TITLE:		TYPICAL CONCRETE FLOAT SECTIONS	
DESIGNED BY:	RJ	PROJECT NO:	194022
DRAWN BY:	WL	DATE:	OCTOBER 2022
CHECKED BY:		SCALE:	NOTED
SHEET NO:		6 OF 9	

10/11/22 - WLE - K120/01/194022 - BANDON MARINA 30% DESIGN REV 2/194022 - BANDON MARINA.DWG



**MAINWALK FLOAT
HDPE SECTION**



**FINGER FLOAT
HDPE SECTION**

30% LEVEL PRELIMINARY PLANS (REV.2)

P | N | D
ENGINEERS, INC.
3240 Eastlake Avenue E.
Seattle, Washington 98102
P: 206.624.1387
www.pndengineers.com

REVISIONS		
REV	DATE	DESCRIPTION

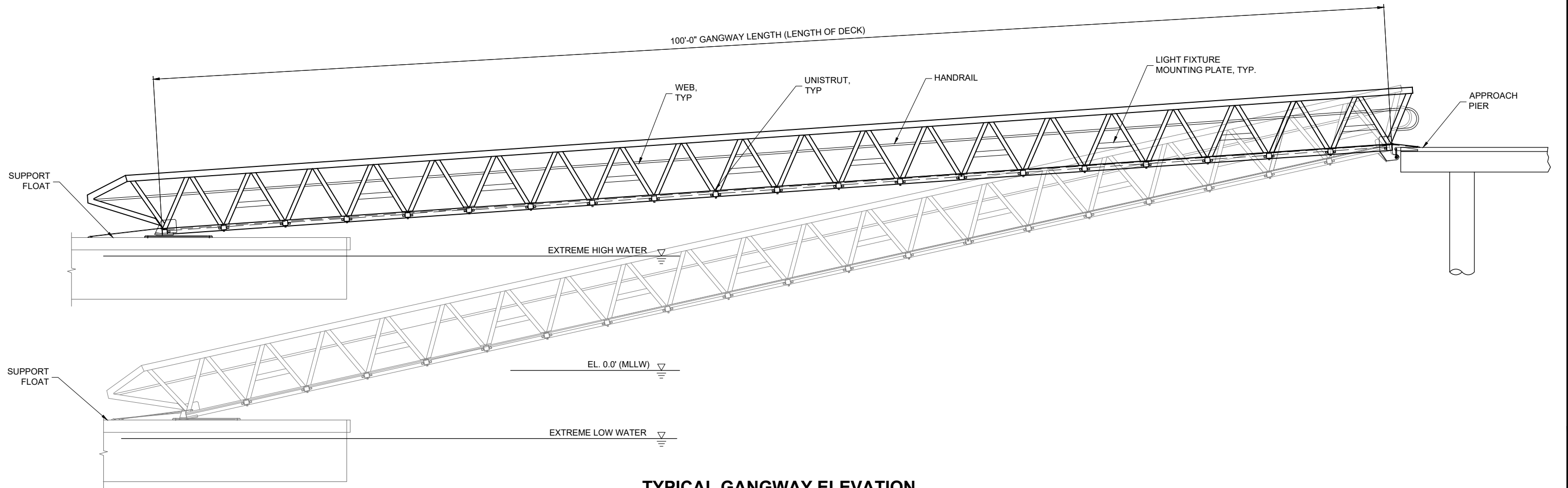
PROJECT: **PORT OF BANDON
BANDON MARINA REDEVELOPMENT**

TITLE: **ALTERNATE HDPE FLOAT SECTIONS**

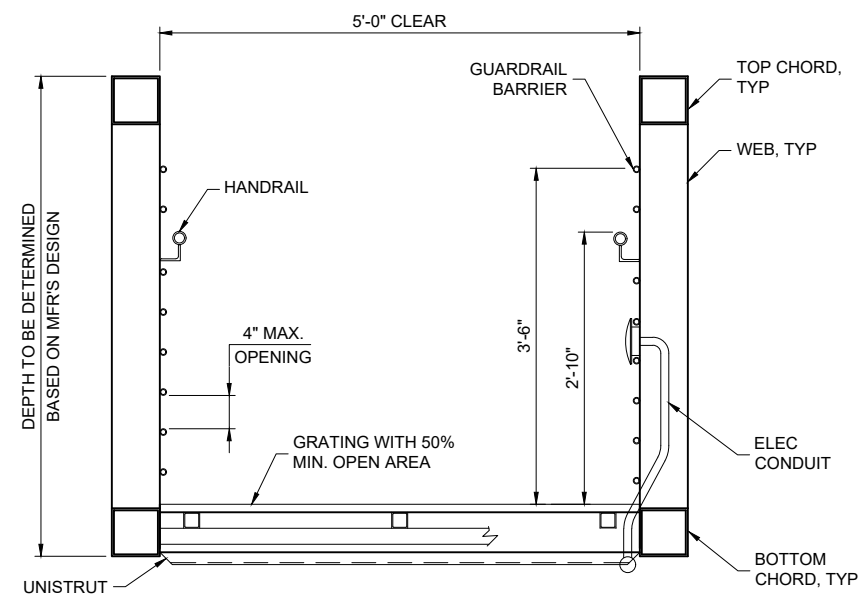
PND ENGINEERS, INC. IS NOT RESPONSIBLE FOR SAFETY PROGRAMS, METHODS OR PROCEDURES OF OPERATION, OR THE CONSTRUCTION OF THE DESIGN SHOWN ON THESE DRAWINGS. WHERE SPECIFICATIONS ARE GENERAL OR NOT CALLED OUT, THE SPECIFICATIONS SHALL CONFORM TO STANDARDS OF INDUSTRY. DRAWINGS ARE FOR USE ON THIS PROJECT ONLY AND ARE NOT INTENDED FOR REUSE WITHOUT WRITTEN APPROVAL FROM PND. DRAWINGS ARE ALSO NOT TO BE USED IN ANY MANNER THAT WOULD CONSTITUTE A DETRIMENT DIRECTLY OR INDIRECTLY TO PND.

DESIGNED BY: RJ	PROJECT NO: 194022	SHEET NO:
DRAWN BY: WL	DATE: OCTOBER 2022	7 OF 9
CHECKED BY:	SCALE: NOTED	

10/11/22 - WLE - K12019194022 - BANDON MARINA 30% DESIGN REV 2/19/2022 - BANDON MARINA.DWG



TYPICAL GANGWAY ELEVATION



TYPICAL GANGWAY SECTION

30% LEVEL PRELIMINARY PLANS (REV.2)



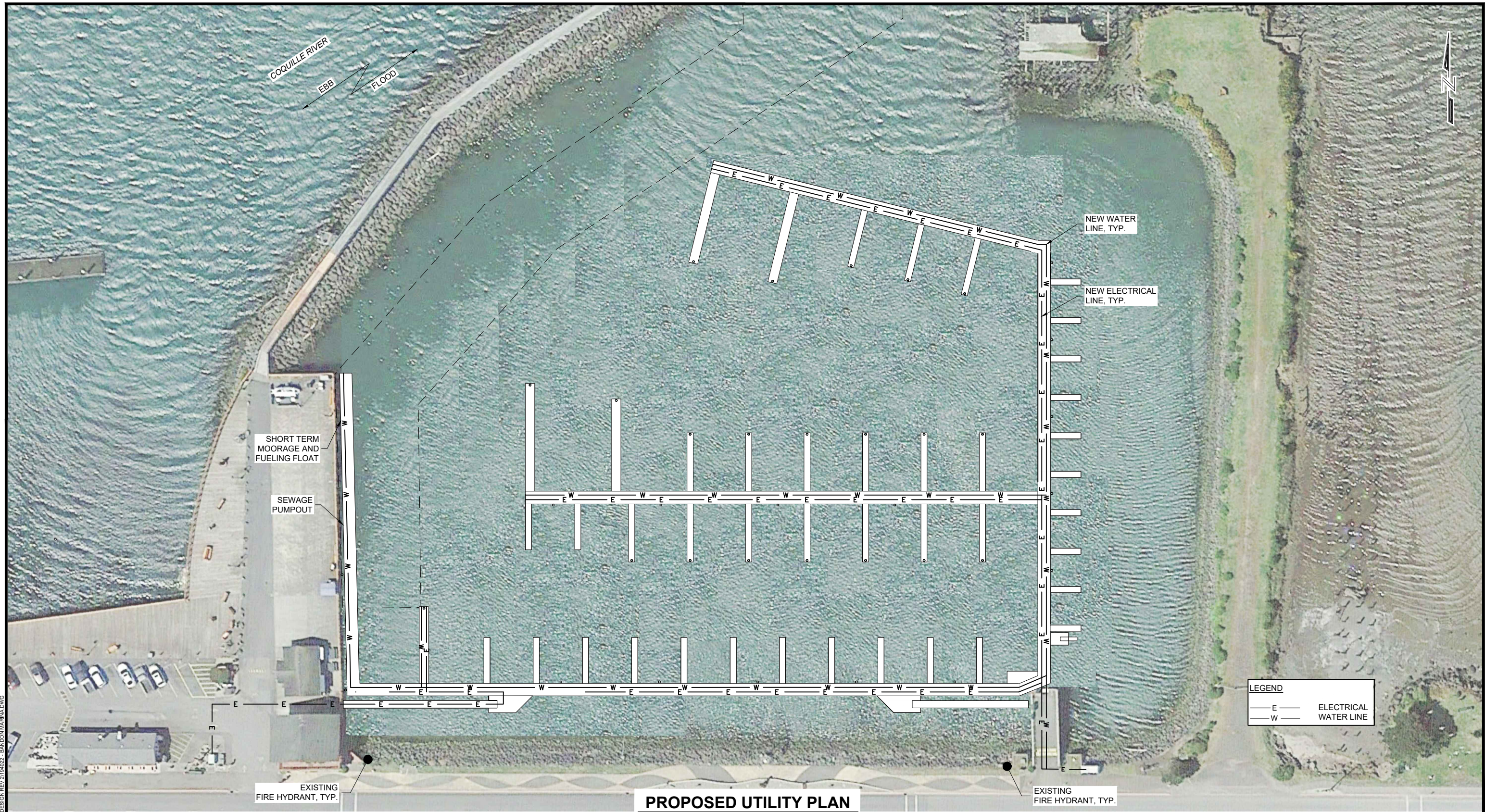
3240 Eastlake Avenue E.
Seattle, Washington 98102
P: 206.624.1387
www.pndengineers.com

REVISIONS		
REV	DATE	DESCRIPTION

PND ENGINEERS, INC. IS NOT RESPONSIBLE FOR SAFETY PROGRAMS, METHODS OR PROCEDURES OF OPERATION, OR THE CONSTRUCTION OF THE DESIGN SHOWN ON THESE DRAWINGS. WHERE SPECIFICATIONS ARE GENERAL OR NOT CALLED OUT, THE SPECIFICATIONS SHALL CONFORM TO STANDARDS OF INDUSTRY. DRAWINGS ARE FOR USE ON THIS PROJECT ONLY AND ARE NOT INTENDED FOR REUSE WITHOUT WRITTEN APPROVAL FROM PND. DRAWINGS ARE ALSO NOT TO BE USED IN ANY MANNER THAT WOULD CONSTITUTE A DETRIMENT DIRECTLY OR INDIRECTLY TO PND.

PROJECT: PORT OF BANDON BANDON MARINA REDEVELOPMENT			
TITLE: GANGWAY DETAILS			
DESIGNED BY: RJ	PROJECT NO: 194022	SHEET NO:	
DRAWN BY: WL	DATE: OCTOBER 2022	8 OF 9	
CHECKED BY:	SCALE: NOTED		

10/11/22 - WLE - K120 01/19/2022 - BANDON MARINA 30% DESIGN REV 2/19/2022 - BANDON MARINA.DWG



PROPOSED UTILITY PLAN

0 10 20 30 60 90 FT.

30% LEVEL PRELIMINARY PLANS (REV.2)

P | N | D
ENGINEERS, INC.
 3240 Eastlake Avenue E
 Seattle, Washington 98102
 P: 206.624.1387
 www.pndengineers.com

REVISIONS		
REV	DATE	DESCRIPTION

PND ENGINEERS, INC. IS NOT RESPONSIBLE FOR SAFETY PROGRAMS, METHODS OR PROCEDURES OF OPERATION, OR THE CONSTRUCTION OF THE DESIGN SHOWN ON THESE DRAWINGS. WHERE SPECIFICATIONS ARE GENERAL OR NOT CALLED OUT, THE SPECIFICATIONS SHALL CONFORM TO STANDARDS OF INDUSTRY. DRAWINGS ARE FOR USE ON THIS PROJECT ONLY AND ARE NOT INTENDED FOR REUSE WITHOUT WRITTEN APPROVAL FROM PND. DRAWINGS ARE ALSO NOT TO BE USED IN ANY MANNER THAT WOULD CONSTITUTE A DETRIMENT DIRECTLY OR INDIRECTLY TO PND.

PROJECT:		PORT OF BANDON BANDON MARINA REDEVELOPMENT	
TITLE:		PROPOSED WATER UTILITY PLAN	
DESIGNED BY:	RJ	PROJECT NO:	194022
DRAWN BY:	WL	DATE:	OCTOBER 2022
CHECKED BY:		SCALE:	NOTED
SHEET NO:		9 OF 9	

10/11/22 - WLE - K12019194022 - BANDON MARINA 30% DESIGN REV 2/19/2022 - BANDON MARINA.DWG